

### 1 Introduction

This document shows how to upgrade the firmware of a separate EmStat Pico module. This does not apply to the EmStat Pico dev board or other end user products made by PalmSens. This document will describe 2 different ways of updating firmware, manual and automatic (using PSTrace).

### 2 Automatic update using FTDI UMFT234XD module

Automatic updates are the easiest way to update the EmStat Pico firmware. However, only EmStat Pico's connected to an FTDI UMFT234XD module are supported. If using a different serial to USB converter or communicating directly to the EmStat Pico using UART, please refer to the section **"Error! Reference source not found."**.

#### 2.1 Hardware connections

To enable PSTrace to put the EmStat Pico into bootloader mode automatically, the "RESET" and "DOWNLOAD" pins need to be connected to the FTDI module. The RTS pin should be connected to the "DOWNLOAD" pin and the CBUS0 pin should be connected to the "RESET" pin. See **"Error! Reference source not found."**.

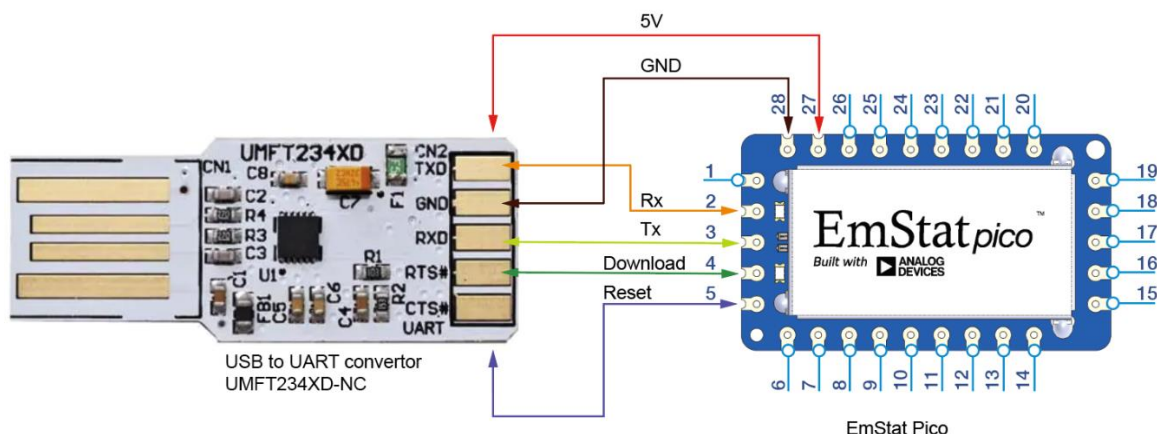


Figure 1: Hardware Connections

#### 2.2 Configuring the UMFT234XD

The FTDI UMFT234XD module needs to be configured to work correctly with PSTrace. This can be done automatically by running "Program ESPicoUSB stick FTDI UMFT234XD.bat", included with this document. Make sure only one FTDI device is connected to the PC before running this batch file.

FT\_Prog can also be used manually, in which case the following values should be modified:

- Ensure "Hardware Specific -> Invert RS232 Signals -> Invert RTS#" is off.
- Set "Hardware Specific -> CBUS Signals -> C0" to GPIO.
- Set "USB String Descriptors -> Product Description" to "ESPicoUSB". This is important for PSTrace so that it can recognize the type of device that is connected.
- Set "Hardware Specific -> Port A -> Driver" to "Virtual COM Port".

## 2.3 Uploading firmware through PSTrace

Once the device FTDI module is configured, the firmware can be updated in PSTrace using the following steps:

- Go to the “Update firmware window”, see “**Error! Reference source not found.**” and “**Error! Reference source not found.**”.
- Select your device in the connection drop down and press “Connect”. See “**Error! Reference source not found.**”.
- PSTrace should have automatically selected the firmware provided with this version of PSTrace. If you wish to change the firmware, this can be done using the “Browse...” button.
- Press the “Start update firmware” button.

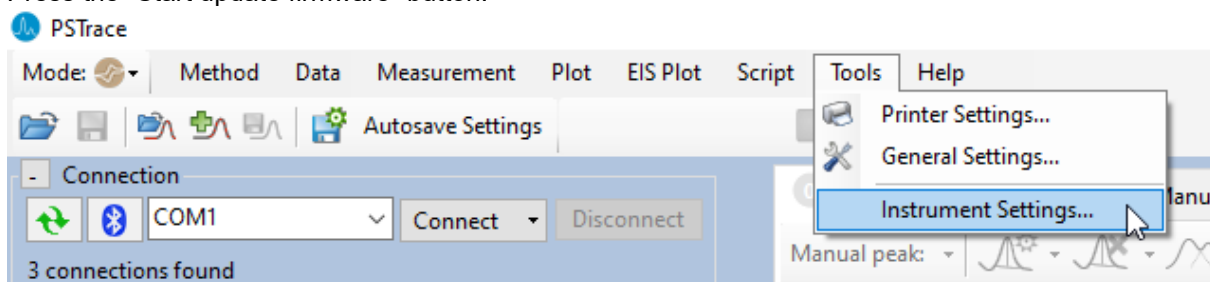


Figure 2: Instrument settings

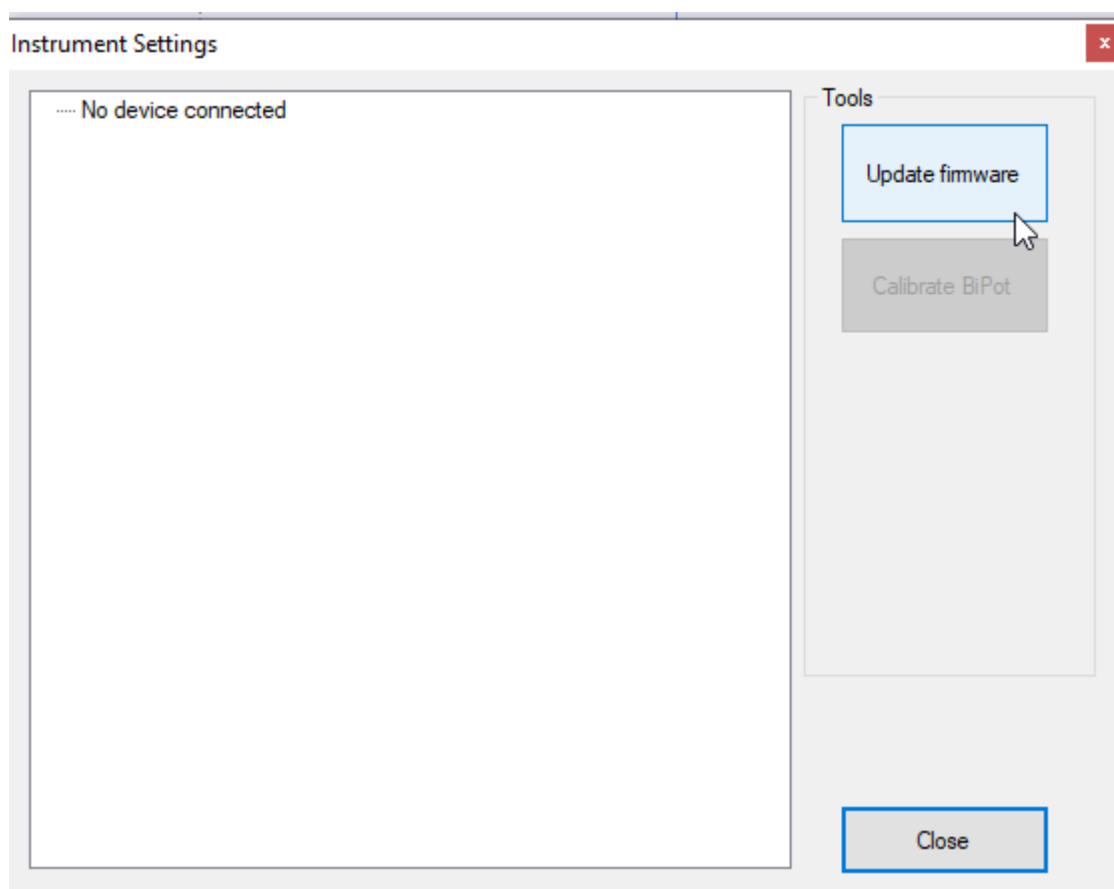


Figure 3: Update firmware

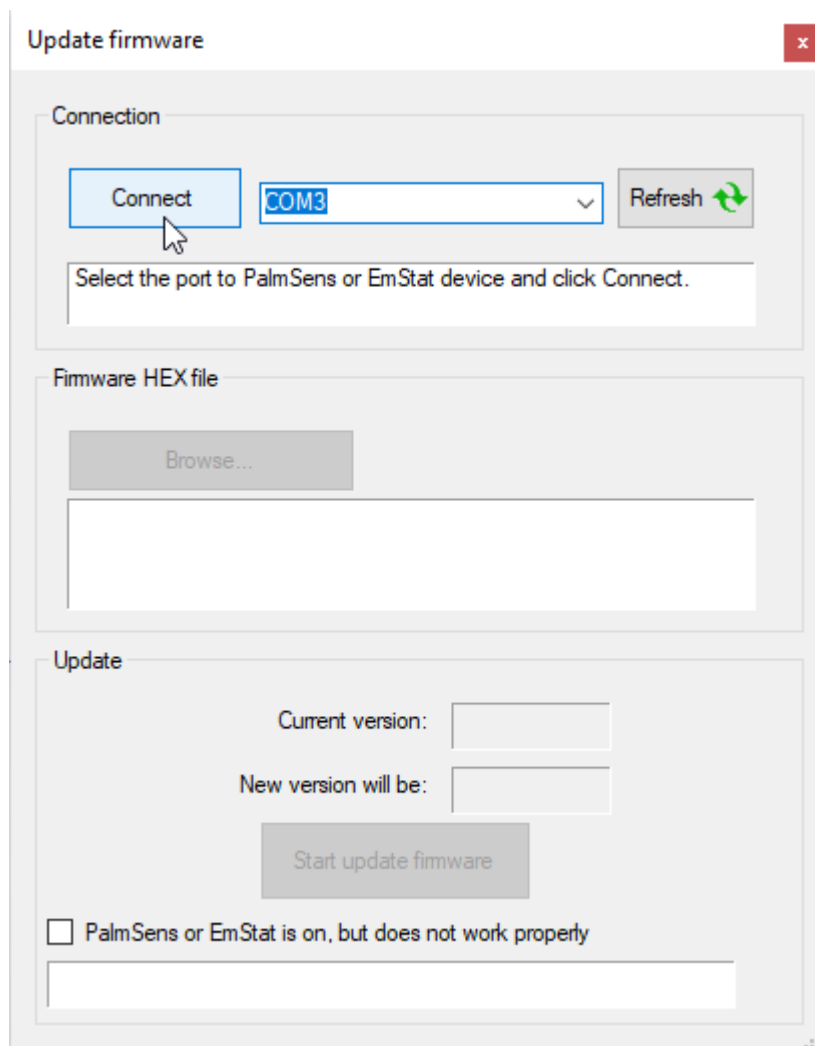


Figure 4: Connect

## 3 Manual firmware update

Manual firmware updating is required when not using PSTrace and/or the supported FTDI UMFT234XD module. The EmStat Pico must be set to bootloader mode manually. The executable "EsPicoProgrammer.exe" can then be used to upload the firmware. The .NET Framework 4.6.1 is required to run this executable.

The firmware files for the EmStat Pico module can be found in the section "Downloads" of the [EmStat Pico's website](#).

### 3.1 USB-232 converter

Instead of the FTDI UMFT234XD module it's possible to use a USB-232 converter. It's important to use a compatible converter. The Pico operates on a limited voltage which is why we recommend to not use a converter that exceeds 3.3V.

### 3.2 Entering bootloader mode

To enter bootloader mode, the "DOWNLOAD" pin must be held at "GND" during the startup of the EmStat Pico. To achieve this, the "GND" pin can be connected to the "DOWNLOAD" pin before powerup. The "RESET" pin can also be pulled to GND for at least 10 ms to reset the device while the "DOWNLOAD" pin is pulled to "GND". See figure "**Error! Reference source not found.**" for the pinout of the EmStat Pico. If the device has successfully entered boot mode, the blue LED will blink.

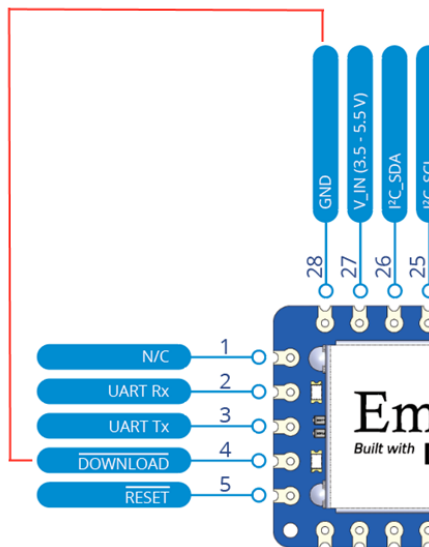


Figure 5: EmStat Pico pinout

## 3.3 Uploading firmware using “EsPicoProgrammer.exe”

The “EsPicoProgrammer.exe” executable can be used to program firmware, settings or licenses onto the EmStat Pico. To upload firmware use the following command:

```
EsPicoProgrammer.exe -upload_fw file port
```

Where:

file: The path to the firmware binary.

port: The COM port of the EmStat Pico.

Example:

```
EsPicoProgrammer.exe -upload_fw "EmStatPico_fw_1_1.bin" COM26
```

To find the com port of the EmStat Pico open the “Device Manager” and look for your device under “Ports (COM & LPT)” as shown below in “**Error! Reference source not found.**”.

See the folder “EsPicoProgrammerSource” for the source code of EsPicoProgrammer.exe. The EsPicoProgrammer project uses “Visual Studio 2019”.

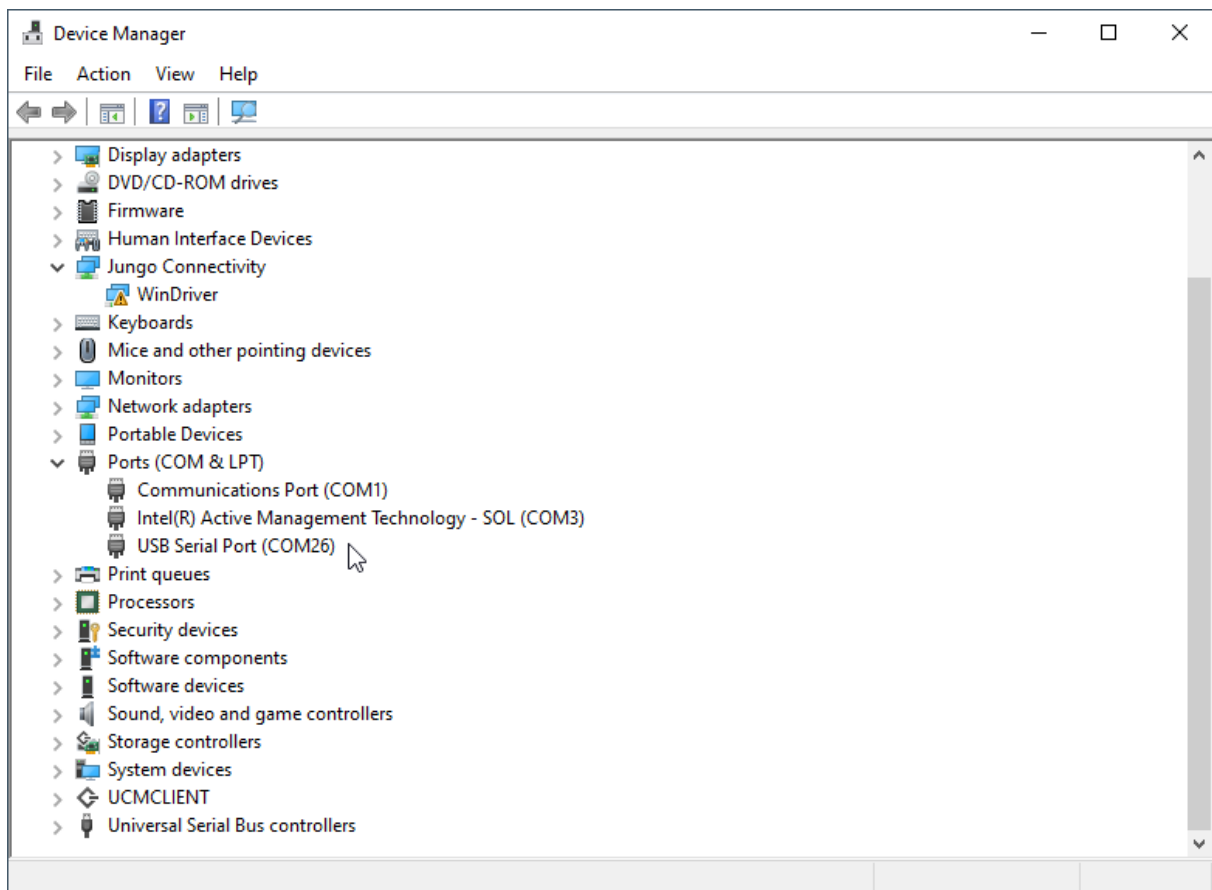


Figure 6: Device Manager